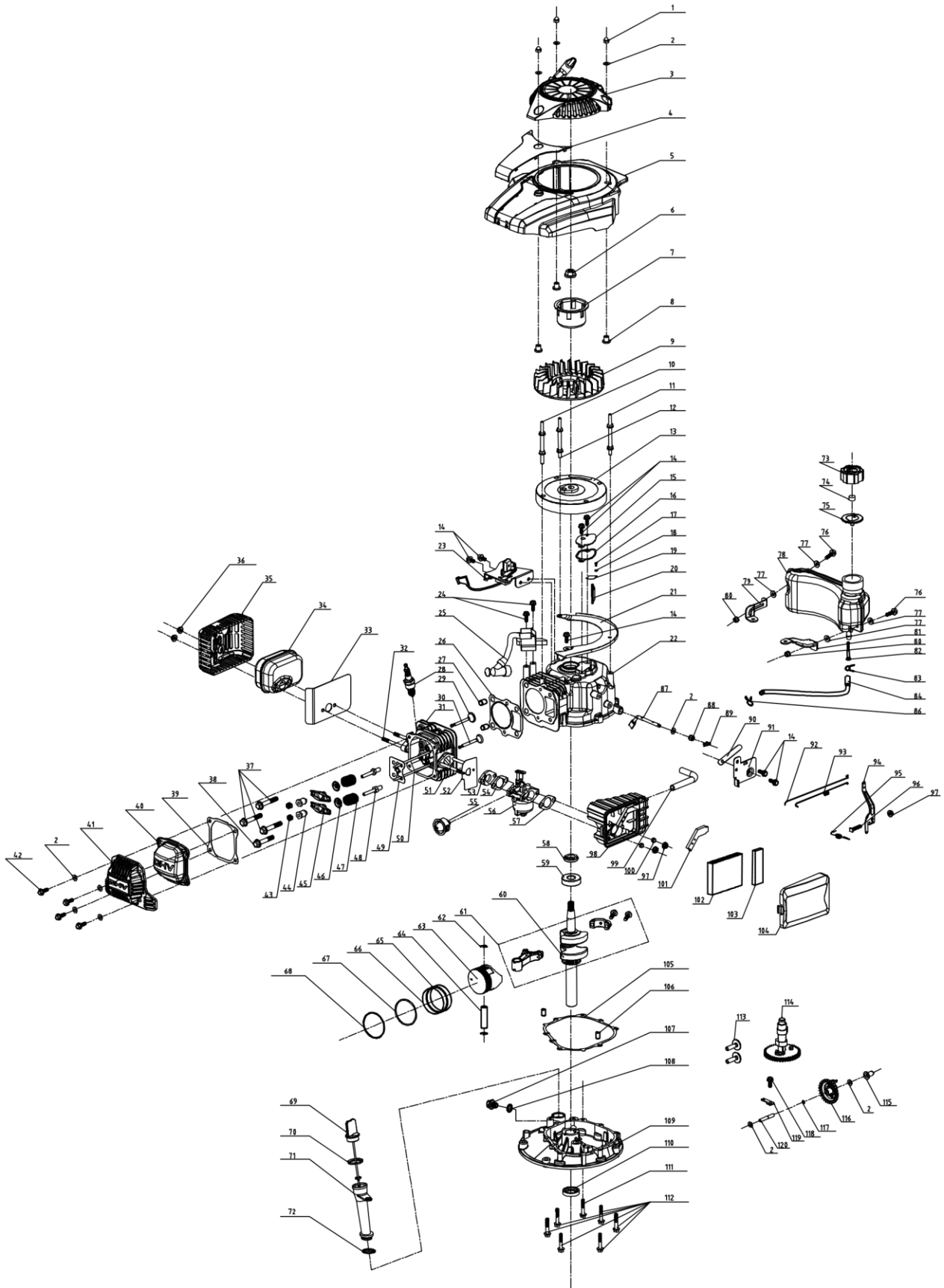


Part No.	Discription in English	Q-ty
1	Stop Lever	1
2	Brake cable	1
3	Foam Pipe	1
4	Upper Handle	1
5	Rope Guide	1
6	II Type Hex Locknut M6	1
7	Flange bolt M6x30	1
8	Carriage Bolt M8x50	2
9	Flat Washer	2
10	Thick Knob	2
11	Hex nut	2
12	Handle plug	2
13	Fastener	1
14	Lower Handle(left)	1
15	Lower Handle(right)	1
16	Rear discharge cover	1
17	Chassis	1
18	Plastic upper cover	1
19	Guard plate of plastic upper cover	1
20	Plastic lower cover	1
21	Screw	8
22	Cross Recess Small Pan Head Screw	2
23	M5x10 Nut M5	2
24	Screw	3
25	Grass Guiding Board	1
26	Mulching Plug	1
27	Spring For Rear Discharge Cover	1

28	Shaft For Rear Discharge Cover	1
29	Bush for Plastic Deck	3
30	Hex Flange Face Bolt	3
31	Long key of crankshaft	1
32	Aluminum blade adapter	1
33	16" blade	1
34	Blade washer	1
35	Hex Flange Face Bolt	1
36	Front guard plate	1
37	Screw	3
38	Jacket of handle	4
39	wheel cover of hub	4
40	Split pin(∅2X20)	2
41	Flat Washer	2
42	Nylon Bush	4
43	7" A type wheel	2
44	Height adjust right handle for rear wheel	1
45	Height adjust left handle for rear wheel	1
46	Height adjust right handle for front wheel	1
47	Height adjust left handle for front wheel	1
48	II Type Hex Locknut M10	2
49	Flat Washer	2
50	6" A type wheel	2
51	T100 Engine	1
52	Nut M6	1
53	Cable Fixing Clamp	1

000100861



no.	english description	Qty
1	Cap nut	3
2	Gasket	10
3	starter assy.	1
4	decoration board	1
5	Blower Housing	1
6	Hex flange nuts	1
7	starter hub	1
8	Blower Housing Bush	3
9	fan	1
10	Special bolt I	1
11	Special bolt II	1
12	Special bolt III	1
13	flywheel assy	1
14	Bolt	7
15	Respirator Cover Plate Assy	1
16		1
17	Cross recessed small Pan head screws	1
18	spring washer	1
19	Respirator spring steel valve element	1
20	oil filter net	1
21	Blower board	1
22	crankshaft box assy.	1
23	detent assy.	1
24	Bolt	2
25	ignition assy.	1
26		1
27	spacing pin	2

28	spark plug	1
29	IntakeValve	1
30	Exhaust Valve	1
31	cyclinder head assy.	1

32	Dual-head bolts	2
33		1
34	muffler assy.	1
35	muffler cover assy.	1
36	Self-locking nut	2
37	locking bolt	3
38	locking bolt	1
39		1
40	cylinder head cover	1
41	cylinder head cover	1
42	Bolt	4
43	And nuts	2
44	Valve adjustment nut	2
45	Rocker of Valve	2
46	Spring Coil of Intake Valve	2
47	valve spring	2
48	valve rocker arm support bolts	2
49	push rod director plate	1
50	push rod	2
51	Dual-head bolts	2
52		1
53	Air Inlet Pipe	1
54		1
55	prime button II	1

56	carburetor assy.	1
57		1
58	oil seal	1
59	rolling bearing	1
60	crankshaft assy.	1
61	connecting rod assy.	1
62	Piston Pin circlip	2
63	Piston	1

64	piston pin	1
65	Bushing Ring	1
66	Guide Rail	2
67	Piston Ring II	1
68	Piston Ring I	1
69	Lubricating Gauge Assy	1
70		1
71	inlet fuel pipe	1
72		1
73	fuel tank cap	1
74	fuel tank cap sponge	1
75	Fuel Tank Cap seal gasket	1
76	Bolt	2
77	Cushion Blocking gasket	4
78	fuel tank body	1
79	right bracket of fuel tank	1
80	Self-locking nut	2
81	left bracket of fuel tank	1
82		1
83	fuel pipe lock clamp I	1

84	inlet fuel pipe	1
86	fuel pipe lock clamp II	1
87	rate-limiting rocker arm shaft	1
88	oil seal	1
89	R type pin	1
90	clip	1
91	single phrase throttle assy.	1
92	Handspike of Valve	1
93	valve spring	1
94	throttle rocker arm	1
95	valve spring	1
96	bolt	1
97	Hex flange nuts	3
98	Air Filter Pedestal	1
99	waste pipe	1
100	air filter bush	2
101	Exhaust Gas Cover Board	1
102		1
103		1
104	Air Filter Upper Cover	1
105		1
106	spacing pin	2
107	Oil drain bolt	1
108	Oil drain bolt gasket	1
109	Crank box cover	1
110	oil seal	1
111	Bolt	1
112	Bolt	6
113	pin	2

114	nynon camshaft assy.	1
115	Sliding Sleeve	1
116	rete-limiting gear assy.	1
117	Gear Shaft circlip	1
118	Bolt	1
119	rate-limiting gear shaft clamp	1
120	rate-limiting gear shaft	1

122 klínek setrváku